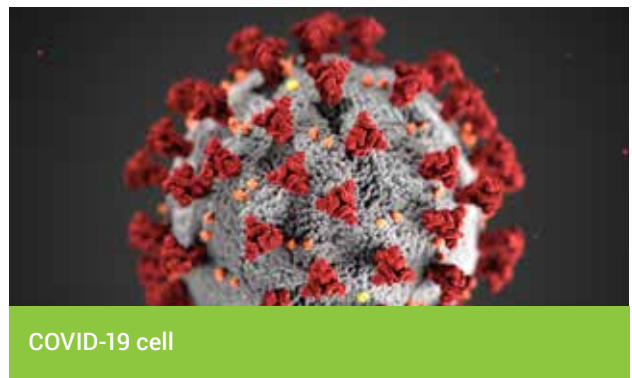


Welcome to the first edition of Nurse News for 2020!

Lymphoma Australia’s Nurse News aims to keep nurses with a special interest in lymphoma up to date with all aspects of lymphoma care locally and from around the world.

Welcome to our first edition of Lymphoma Nurse News for 2020! It is only March however this year has brought us many different challenges from bushfires, drought, floods and now the coronavirus (COVID-19). Lymphoma Australia hope that you and your family remain safe and well through this crisis. On behalf of lymphoma/CLL patients and families, we would like to thank nurses across Australia and NZ. Thank you for all for working hard on the front lines in hospitals, clinics and through organisations such as ours to ensure that people affected by lymphoma/CLL receive the care and support that they need to get through this difficult time.

Lymphoma/CLL patients and their loved ones are very concerned about the risks for their health. This is understandable considering most lymphoma/CLL patients have compromised immune systems, through treatment, post treatment and living with cancer. As you know, there is a lot of information coming from media outlets, panic buying at supermarkets that is contributing to people’s anxiety. Lymphoma



Australia are working to help manage this where we are receiving the best up to date advice to provide them with the best information and support that we can.

Continued on Page



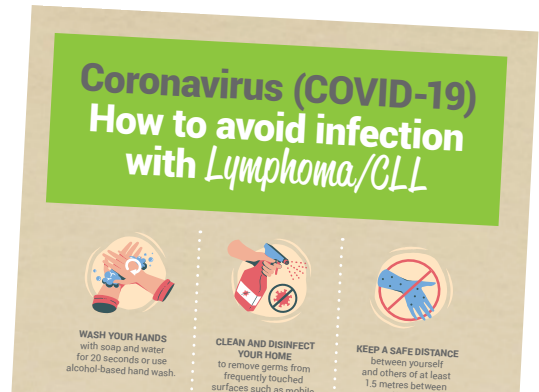
Inside	
Welcome	1
COVID-19 and Lymphoma/CLL	2
Meet Samantha Ormerod	3
Lymphoma News & Updates.....	4
Lymphoma Australia Resources	7
EviQ Haematology Updates.....	9
Upcoming Education Events	10

Coronavirus (COVID-19) and Lymphoma

Active treatment for lymphoma & CLL can reduce the effectiveness of the immune system. People who have weakened immune systems are at greater risk of getting infections and need to take precautions to reduce the chances of getting an infection.

- People who have lymphoma/CLL are at a higher risk, especially when:
- Receiving chemotherapy, or who have received chemotherapy in the last 3-12 months
- Receiving immunotherapy or other continuing antibody treatments for cancer
- Receiving other targeted cancer treatments which can affect the immune system, such as protein kinase inhibitors (eg. Ibrutinib)
- Those who have had a bone marrow or stem cell transplant in the last 6-12 months or who are still taking immunosuppressive drugs
- People with lymphoma or CLL which can damage the immune system, even if they have not needed treatment or are in remission with a compromised immune system
- People over 65 years need to take particular care or have co-morbidities
- Patients need to speak to their doctor for their individual risk

To support patients and their loved ones, Lymphoma Australia have provided:



Lymphoma Australia's COVID-19 Poster

- Statements to keep them informed through our website
- Online patient/carer private Facebook group (Lymphoma Down Under)
- Coronavirus (COVID-19) fact sheet to explain to lymphoma/patients and carers their risk, signs & symptoms, ways to avoid infection, to keep healthy and where to receive the latest & best information; <https://bit.ly/3dvtW1W>
- COVID-19 poster with ways to avoid infection
- A/Prof Chan Cheah has provided a video to update those affected by lymphoma/CLL on COVID-19 and to answer the common questions that are being asked.

Please let your patients know about these resources to keep them informed and good for you to know what is concerning them too. You can find these on our website and in the resource section.

Face to face nurse education events and hospital visits have been postponed for the time being due to the coronavirus outbreak. We are looking at providing digital meetings and/or



Samantha Ormerod

Lymphoma Care Nurse - Queensland

Lymphoma Australia would like to introduce Samantha Ormerod, one of our new Lymphoma Care Nurses to join our team in Queensland.

Samantha will join Rebekah Needer (nee Turner) in the Queensland Lymphoma Care Nurse Team. Samantha is based in Brisbane and together they will be visiting (when coronavirus subsides) or contacting you soon throughout Queensland, to provide awareness, advocacy and education for lymphoma/CLL patients and health care professionals, especially nurses.

Samantha gained her degree in nursing in Durban, South Africa in 1994. Samantha has over 25 years of experience in nursing fields such as intensive care, Coronary Care,

Haematology, Oncology and Infusion Medicine. She has also worked as a nurse educator in multiple pharmaceutical companies delivering peer to peer nurse education. She specialised in areas such as neuroscience, haematology and oncology.

She is Member of Cancer Nurses Society of Australia, Haematology Society of Australia and New Zealand, immunoglobulin National Society and MS Nurses Australasia.

Samantha's love for travel has taken her to New Zealand, South Africa, United Kingdom and Australia where she has worked as a registered nurse.

Welcome Samantha! Please contact Samantha: samantha.ormerod@lymphoma.org.au

presentations in the near future to help your continued educational needs. Please contact us if you would like us to provide your hospital with a remote education session. We still aim to keep you updated through our newsletters, emails, resources and through our Facebook group

"Lymphoma Nurses Down Under".

Please contact Donna Gairns, National Nurse Director for more information: donna.gairns@lymphoma.org.au or nurse@lymphoma.org.au

CAR T-cell Therapy for Aggressive B-cell *Lymphoma*

The Federal Health Minister, Hon. Greg Hunt MP announced today at Peter MacCallum Cancer Centre, that CAR T-cell therapy (Kymriah, from Novartis) will be manufactured and reimbursed in Australia for eligible adults with relapsed or refractory diffuse large B-cell lymphoma (DLBCL), transformed follicular lymphoma (FL) and primary mediastinal B-cell lymphoma (PMBCL).

CAR T-cell therapy will be reimbursed (over \$500,000 AUD per person) by the Medical Benefits Scheme (MBS) for adult patients who have these lymphoma subtypes who have previously failed at least 2 lines of standard treatment.

CAR T-cell therapy has seen good responses for patients across the world in clinical trials for those with a number of different blood cancers who have been previously unsuccessful with other cancer treatments. Australia now joins only 6 other countries from around the world to provide this potentially lifesaving treatment for patients with lymphoma. Until now, eligible patients have needed to travel to the USA for manufacturing and treatment, while being away from Australia 2-3 months.

Chimeric antigen receptor (CAR) T-cell therapy, is an exciting new form of immunotherapy that uses specially altered T-cells (lymphocytes) to directly and precisely target cancer cells. The patient's own T-cells are collected from



Hon. Greg Hunt, MP

the blood and are re-engineered in a special laboratory, so they carry special receptors (CARs) on their surface. The cells are then reinjected back into the patient where they multiply rapidly, and the receptors help the T-cells to identify and attack cancer cells throughout the body.

Dr Michael Dickinson, Lead Aggressive Lymphoma at Peter MacCallum Cancer Centre was one of the key leaders that made this announcement a reality. He spoke with Lymphoma Australia after the announcement, where he “welcomed the news for lymphoma patients who now have another option when standard chemotherapy does not work.”

Manufacturing will commence in Australia in the next few months, patients can have their T-cells collected in Australia and manufacturing will be done in the USA. Patients can also utilise the Medical Travel Overseas Program (MTO) until other sites are up and running. This is great news for patients, who this provides another option to overcome R/R aggressive lymphoma. See Lymphoma Australia website for more information.

Lymphoma & CLL Pharmaceutical Updates

Please see below the results from the November 2019 Pharmaceutical Benefits Advisory Committee (PBAC) meeting.

Drug name and sponsor	Subtype	Listing requested and purpose	PBAC outcome
Ibrutinib (Janssen)	Chronic lymphocytic leukaemia (CLL) or small lymphocytic lymphoma (SLL)	Resubmission to request PBS reimbursement for the treatment of CLL or SLL with evidence of one or more 17p chromosome deletion	PBAC recommended the PBS listing of ibrutinib for first-line treatment with CLL/SLL with deletion 17p
Polatuzumab Vedotin (Roche)	Diffuse large B-cell lymphoma (DLBCL)	New listing for the treatment of relapsed or refractory DLBCL who are ineligible for transplant	PBAC did not recommend the listing in combination with bendamustine & rituximab – further clinical trials needed

Please see below the March 2020 PBAC meeting discussed the following in their agenda for lymphoma/CLL, however the outcomes for the meeting are yet to be released.

Submission type	Drug name and sponsor	Drug type and use	Listing requested by sponsor/ purpose
New listing	Acalabrutinib (AstraZeneca)	Chronic lymphocytic leukaemia (CLL) or small lymphocytic lymphoma (SLL)	To request PBS listing for the treatment of patients with relapsed or refractory CLL or SLL unsuitable for treatment with a purine analogue
Change to listing	Pembrolizumab (MSD)	Primary mediastinal B-cell lymphoma (PMBCL)	Resubmission to request PBS listing for the treatment of relapsed or refractory PMBCL
Change to listing	Venetoclax (AbbVie)	Chronic lymphocytic leukaemia (CLL)	PBS listing in combination with obinutuzumab for the first-line treatment of patients with CLL & unsuitable for fludarabine based chemotherapy

New *Lymphoma* Clinical Nurse Consultant – Perth

I would like to congratulate Helena Furdas, who joins the lymphoma service as the new Lymphoma Clinical Nurse Consultant at Sir Charles Gairdner Hospital and Blood Cancer Research WA. Helena graduated from nursing at Curtin University in 2009 and shortly thereafter began her haematology experience in 2010 whilst working at Royal Perth Hospital on the Bone Marrow Transplant Unit. Since then she has continued to work in haematology and in 2015 transitioned with the State Centre for Allogeneic stem cell transplant to Fiona Stanley Hospital. Here she enjoyed working in the Cancer Centre providing care for patients to keep them well, happy and out of hospital.



Helena Furdas, Lymphoma CNC, SCGH

As the newest member of the team Helena is excited to be the Lymphoma CNC and looks forward to helping patients navigate their journey through lymphoma.

Lymphoma Australia – New Referral Form

Lymphoma Australia have created a new patient and carer referral form. The form has been created so as to connect patients and their loved ones to Lymphoma Australia to ensure that they receive the best information about their subtype, treatment and supportive care options. To ensure that those affected know about our organisation early in their journey, to know that we are here for them when and if needed. It would be great to hear your feedback. The process includes:

- The referral form can be either completed online or printed to be filled in
- Health professional to refer the patient by completing their details for them or give to patient to fill in themselves and give back to

you to email back to us

- Emailed back to Lymphoma Australia's Lymphoma Care Nurse team nurse@lymphoma.org.au
- The Lymphoma Care Nurses will triage and contact the patient or carer to best support them
- Resources and information sent to the referee as required
- We are developing age appropriate information packs to send patients
- A link to the form can be found on the Lymphoma Australia website under the "Nurses- healthprofessionals/nurses" tab or we can send you hard copies. <https://bit.ly/2Jf8j8l>

New Lymphoma Australia Resources



Subtypes and Management

- Coronavirus (COVID-19) and lymphoma/CLL
- Coronavirus (COVID-19) How to avoid infection with lymphoma/CLL (poster)
- Double hit & triple hit Lymphoma
- Primary central nervous system lymphoma
- Relapsed or refractory lymphoma

Supportive Care

- Emotional impact of living with lymphoma
- Emotional impact of relapsed or refractory lymphoma
- Self-care and lymphoma
- Nutrition and lymphoma
- Complementary and alternative therapies: lymphoma

Updated Booklets and Fact Sheets

- Lymphoma: what you need to know
- Patient Diary – Keeping track of my lymphoma and CLL
- Diffuse large B-cell lymphoma
- Mantle cell lymphoma
- Primary mediastinal B-cell lymphoma
- Transformed lymphoma
- Understanding clinical trials

 <https://bit.ly/2UpILgh>

Lymphoma Australia have been interviewing and filming expert haematologists from Peter MacCallum Cancer Centre on a variety of lymphoma & CLL topics. Please check out our YouTube channel for these and many more presentations. <https://bit.ly/2UpF35f>

Dr Michael Dickinson, Lead Aggressive Lymphoma

- Diffuse Large B-cell Lymphoma
- Treating relapsed lymphoma – General landscape
- Clinical Trials in Lymphoma



Prof John Seymour, Director: Department of Haematology

- The use of venetoclax in chronic lymphocytic leukaemia

A/Prof Constantine Tam, Lead Indolent Lymphoma

- What is mantle cell lymphoma?
- Clinical Trials in Mantle Cell Lymphoma

Dr Mary Ann Anderson, Consultant Haematologist and Low-grade Lymphoma & CLL

- What is lymphoma and how is it treated?
- What is CLL and how is it managed?

Dr Carrie Van Der Weyden, Consultant Haematologist and T-cell lymphoma

- What is peripheral T-cell lymphoma?
- What is cutaneous T-cell lymphoma?

Dr Amit Khot, Consultant Haematologist and Bone Marrow Transplant Physician

- What is the difference between autograph and allograft transplants?

Lymphoma NURSES CAN CHANGE LIVES



Alfred hospital – Specialist Cancer Nursing

Are you considering a nursing
carer change?

The Alfred Health Cancer Program is responsible for the overall delivery of a comprehensive cancer service which includes a number of clinical areas and units including; Medical Oncology, Haematology, Bone Marrow

Transplant, State-wide Haemophilia Service, Radiation Oncology, Palliative Care and the Victoria Melanoma Service.

If you would like more further information on our service contact us at: Sue Collings – Nurse Unit Manager on (03) 9076 3671 or scollings@alfred.org.au

Meet the *Lymphoma* Australia staff members

For those who are new to Lymphoma Australia, I would like to introduce you to our current team members:

Sharon Millman	CEO
Donna Gairns	National Nurse Director
Carol Cahill	Community Support Manager
Josie Cole	Fundraising Manager

Sharna Moloney	Lymphoma Care Nurse – Projects
Deborah Sims	Development and Patient Advocacy Director
Samantha Ormerod	Lymphoma Care Nurse – QLD
Rebekah Needer	Lymphoma Care Nurse – QLD
Rebecca Beck	Lymphoma Care Nurse – NSW

EviQ Haematology Updates

Please see the updated protocols that have been added on eviQ over the last few months for haematology from December 2019 to March 2020

New protocols recently published

- [ID 3671](#) Pembrolizumab (flat dosing) multi-indication protocol

New documents recently published

- [ID 3745](#) - Understanding total body irradiation (TBI) - Single fraction treatment

Protocols recently updated

- [ID 611](#) Burkitt lymphoma dmCODOX-M/IVAC treatment overview
- [ID 560](#) Burkitt lymphoma dose modified CODOX-M (CYCLOPHOSPHamide vinCRISTine DOXOrubicin methotrexate)

- [ID 549](#) Burkitt lymphoma IVAC (iFOSFamide etoposide cytarabine)
- [ID 3358](#) Multiple myeloma carfilzomib and dexamethasone

Documents recently updated

- [ID 1795](#) Herpes simplex virus (HSV) and varicella zoster virus (VZV) prophylaxis in immunocompromised adults
- [ID 909](#) Hazardous drugs table
- [ID 188](#) Safe handling and waste management of hazardous drugs
- [ID 1027](#) Antithymocyte globulins for graft versus host disease (GVHD) prophylaxis in blood and marrow transplant (BMT)
- [ID 482](#) - Understanding total body irradiation (TBI) - Multi-fraction treatment. Previously titled "Total body irradiation (TBI)"

From Page 1

Lymphoma Australia has developed and provided information about COVID-19 and how this affects lymphoma/CLL patients and their families, that we will describe in this edition. We are also looking at new and different ways to reach cancer nurses across Australia and ensure you receive the information you need to care for lymphoma/CLL patients.

On a lighter note, Lymphoma Australia is

excited to welcome two new Lymphoma Care Nurses who have joined the team. Samantha Ormerod joined the team and is based in Brisbane and will join Rebekah Needer (nee Turner) in Queensland. We also welcome Rebecca Beck, based in Sydney to represent New South Wales. If you are based in these states, please say hello and welcome them. We are also sad to say goodbye to Sarah Williams from Queensland who has left the team and we wish her all the best in her new role.

Upcoming Education and Conference Events

Upcoming dates to keep on your calendar

As the COVID-19 pandemic is increasing with restrictions, including education events, Lymphoma Australia will not be hosting any face to face education events or hospital visits. We will be planning future webinar events and recorded presentations to ensure your education needs are met. In the meantime, please see our current library of education videos in the Lymphoma Australia YouTube channel.

 <https://bit.ly/2UjueRU>

Let us know what lymphoma topics you want to learn about!

Australasian Leukaemia & Lymphoma Group (ALLG) meetings May Meeting

Date: 12–15 May 2020
Time: TBC
Venue: Park Hyatt, Melbourne
Note: TBC as meeting may now be online

October Meeting

Date: 13–16 October 2020
Time: TBC
Venue: Brisbane

Cancer Nurses Society of Australia – Congress

Date: 18–20 June 2020
Time: TBC
Venue: Brisbane Convention Centre
Note: Congress has been cancelled due to COVID-19. Organisers are looking at providing webinars instead.

25th EHA (European Haematology Association) Congress

Date: 11–14 June 2020
Time: TBC
Venue: Frankfurt, Germany
Note: <https://bit.ly/2UIFDtu>

Blood – Annual Scientific Meeting

Date: 15–18 November 2020
Time: TBC
Venue: Adelaide Convention Centre
Note: Registrations & abstracts open 19 March 2020. <https://bit.ly/33Q839c>

62nd American Society of Hematology

Date: 5–8 December 2020
Time: TBC
Venue: San Diego Convention Centre
Note: <https://bit.ly/2xuf3wa>

Thank you again for all of your support for the work that we do. Please do not hesitate to contact us if you have any questions or suggestions. **Donna Gairns** National Nurse Director
donna.gairns@lymphoma.org.au or 0404 749 884



Join our dedicated closed Facebook group for patients and carers by searching **Lymphoma DOWN UNDER**

For more information visit www.lymphoma.org.au
Lymphoma Australia | PO Box 676 Fortitude Valley QLD 4006
enquiries@lymphoma.org.au | 1800 359 081

